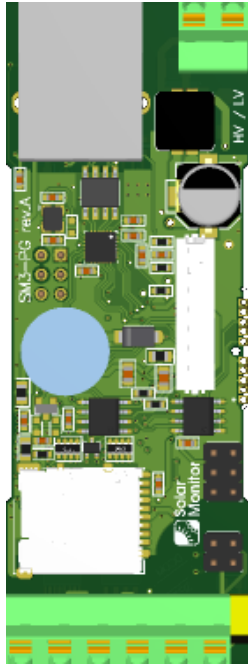
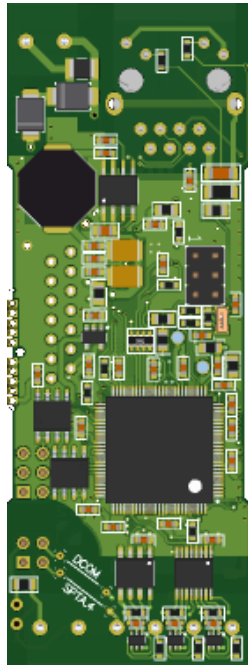


Variant 1MB flash, 65V power supply

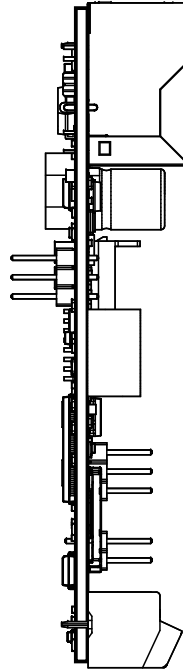
Realistic View - Top



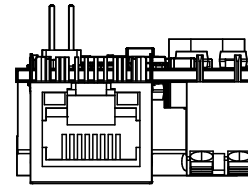
Realistic View - Bottom



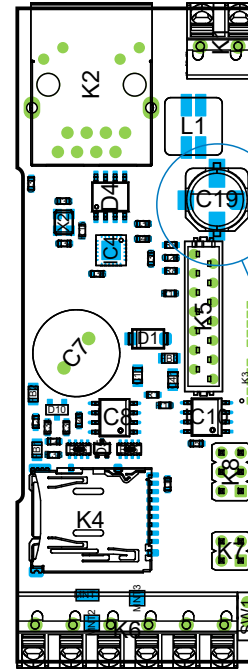
View from Left



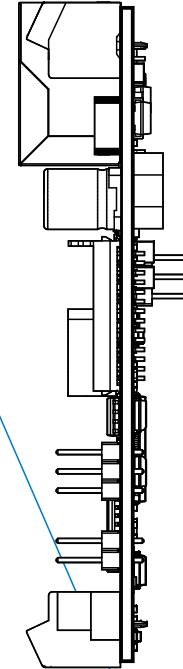
View from Back



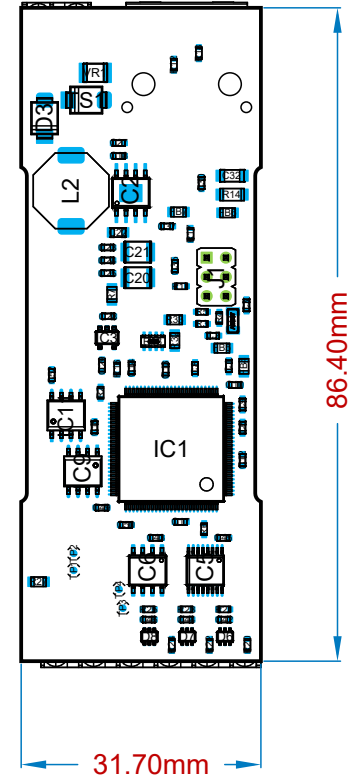
View from Top



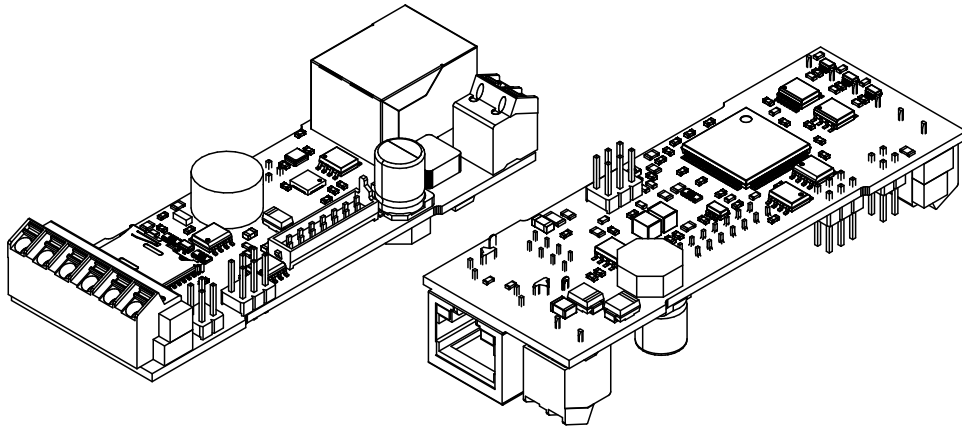
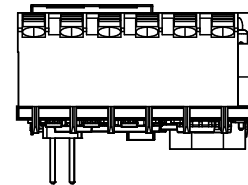
View from Right



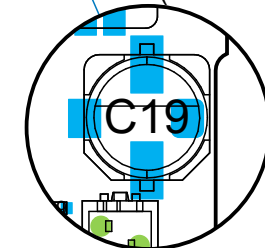
View from Bottom



View from Front



DETAIL A (Scale 2:1)



Bill Of Materials

Line #	Designator	Comment	Quantity
1	C1, C5, C8, C10, C12, C13, C14, C15, C16, C17, C30, C31, C43, C45, C48, C49, C50, C51, C52	100nF	19
2	C2, C3	12pF	2
3	C4, C28, C29, C39	2.2uF	4
4	C6, C9	10nF	2
5	C7	0.22F / 5.5V	1
6	C11	10uF	1
7	C18	100nF/16V	1
8	C19	22uF / 100V	1
9	C20, C21	4.7uF / 100V	2
10	C22	220nF / 100V	1
11	C23, C24, C25, C35, C37	22uF	5
12	C26	68pF	1
13	C27	1uF/16V	1
14	C32	1nF	1
15	C33, C34	18pF	2
16	C36, C38, C40	100nF	3
17	C41	10uF	1
18	C42, C44, C46	10nF	3
19	D1	1A / 40V	1
20	D3	2A / 60V	1
21	D4	CDNBS08-SLVU2.8-4	1
22	D5	0.3A / 30V	1
23	D6, D7, D8	0.2A / 30V	3
24	D10	SM712-02HTG	1
25	FB1, FB2, FB3, FB4, FB5, FB6, FB7	BLM21PG331SN1D	7
26	IC1	MK64FN1M0VLL12	1
27	IC2	LMR36520	1
28	IC3	TLV75533PDBVR	1
29	IC4	KSZ8081RNAIA-TR	1
30	IC5	ISO1212DBQR	1
31	IC6	ISO1211DR	1
32	IC8	ADM3485E	1
33	IC9	SST25VF020	1
34	IC10	24LC256-I/SN	1
35	IC11	FM24CL64B	1
36	J1	pin strip 3x2	1
37	K1	SPTA 1/2-5,0	1
38	K2	J0011D01BNL	1
39	K4	DM3AT-SF-PEJM5	1
40	K5	TMM-3-0-14-2	1
41	K6	SPTA 1/6-5,0	1
42	K7	Würth Electronics Inc. 61300421121	1

Bill Of Materials

Line #	Designator	Comment	Quantity
43	K8	Würth Electronics Inc. 61300621121	1
44	L1	SRF0703-4R7	1
45	L2	10uH	1
46	R1, R3, R5, R20, R22, R24	0	6
47	R2, R38	10k	2
48	R4	1M	1
49	R6	100k	1
50	R7	0	1
51	R8	59k 1%	1
52	R9	20k 1%	1
53	R10, R11	4k7	2
54	R12, R18	220	2
55	R13	33R	1
56	R14	1M	1
57	R16	33R	1
58	R17	6k49	1
59	R19	10k	1
60	R21, R23, R25	560	3
61	R27	100	1
62	R32, R33	10	2
63	R35, R36	10k	2
64	SW1	JSA4-1-G0	1
65	TS1	SM6T68CA	1
66	VR1	B72530T0500K062	1
67	X1	32.768 kHz	1
68	X2	25 MHz	1